

Flexible Connection to PCoIP and Azure Virtual Desktop Sessions

teradici®

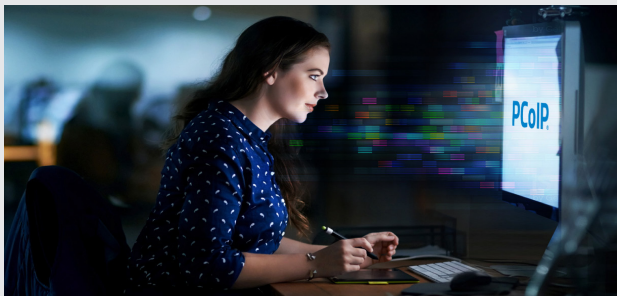


It's the best of both worlds

Customers now have the freedom and flexibility to choose between leading remote desktop solutions from Microsoft Azure and Teradici to fit their business and IT infrastructure needs!

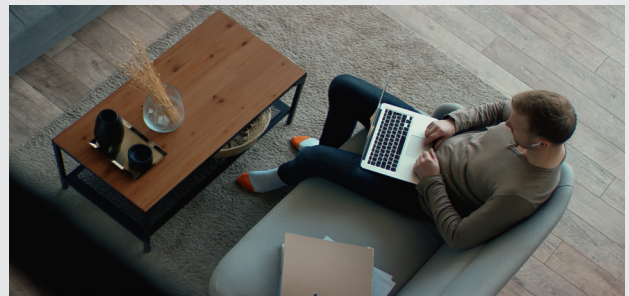
Introducing the Teradici CAS Client for Linux that enables customers to connect to both PCoIP and Azure Virtual Desktop sessions. Customers can choose to use the PCoIP protocol when connecting to remote desktops for high performance, graphics-intensive workloads or use Azure Virtual Desktop when connecting to workloads for multi-session Windows 7, Windows 10, Windows 11 desktops, and Windows 365 via the RDP protocol.

Teradici CAS



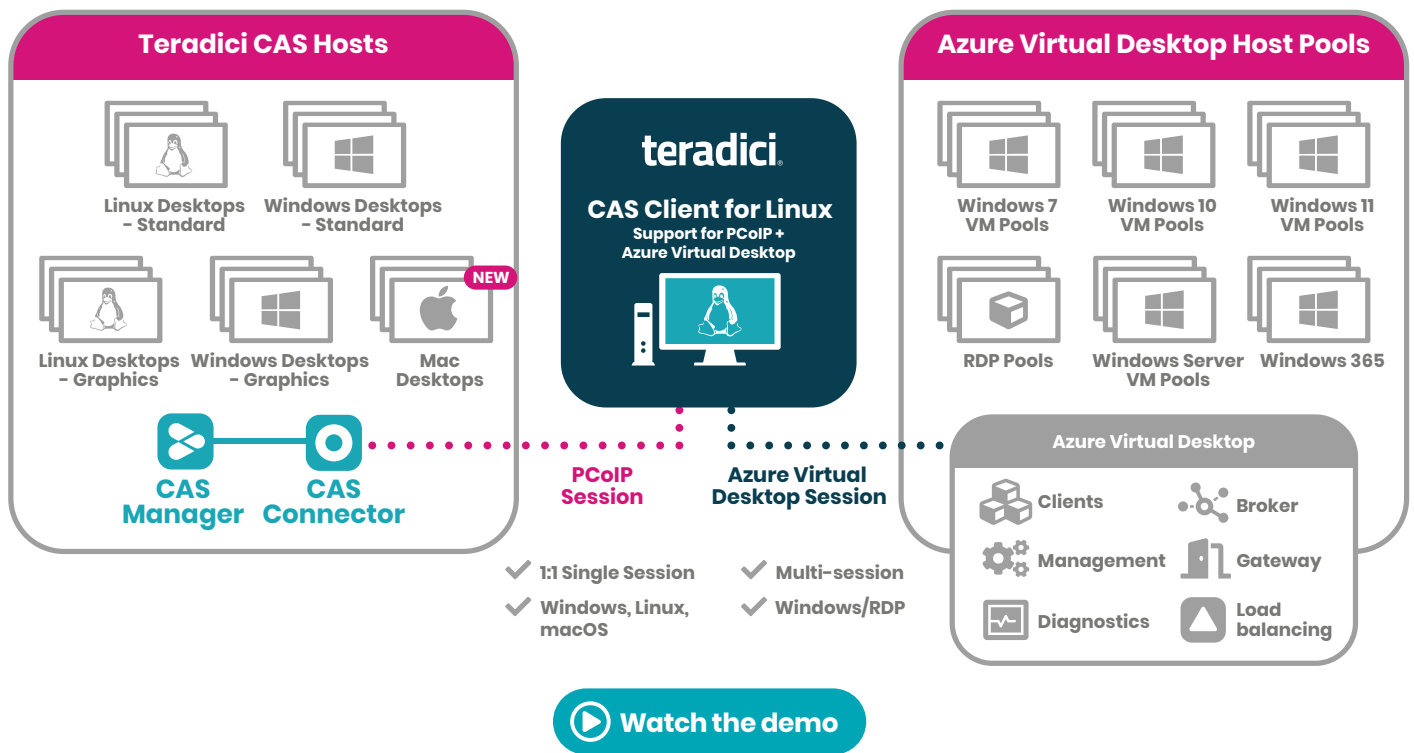
Powered by the PCoIP protocol, Teradici CAS is a secure remote desktop solution that delivers a high-definition, uncompromised user-experience from anywhere, including on-premises. It offers the best remote desktop performance and infrastructure flexibility, supporting Windows, Linux, and now macOS environments. CAS is best suited for demanding users with requirements for a highly responsive, color-accurate, lossless, and distortion-free remote desktop experience, such as those in media and entertainment and for CAD and 3D application use cases.

Azure Virtual Desktop



Azure Virtual Desktop is a Windows remote desktop solution powered by the RDP protocol. It has multi-session capabilities for concurrent interactive sessions and provides a cost advantage as desktops include Windows licensing and uses existing per-user Windows licensing instead of RDS Client Access Licenses (CALs). Azure Virtual Desktop is best suited for knowledge users and is popular in education, healthcare, finance and more.

How it works



The Teradici CAS Client for Linux can be installed on any PC or Thin Client device running Ubuntu 20.04.

Technical requirements

- ✓ Support endpoints: PCs or Thin Clients
- ✓ Supported endpoint OS: Ubuntu 20.04

PCoIP sessions

- Supported remote desktop solutions: Teradici CAS
- Supported OS: Windows, Linux, and macOS
- PCoIP Standard (no GPU support) and Graphics Agents (with GPU support)

Azure Virtual Desktop sessions

OS	Required License
Windows 10 Enterprise multi-session or Windows 10 Enterprise	Microsoft 365 E3, E5, A3, A5, F3, Business Premium Windows E3, E5, A3, A5
Windows 7 Enterprise	Microsoft 365 E3, E5, A3, A5, F3, Business Premium Windows E3, E5, A3, A5
Windows Server 2012 R2, 2016, 2019	RDS Client Access License (CAL) with Software Assurance

See detailed requirements for Azure Virtual Desktop [here](#).